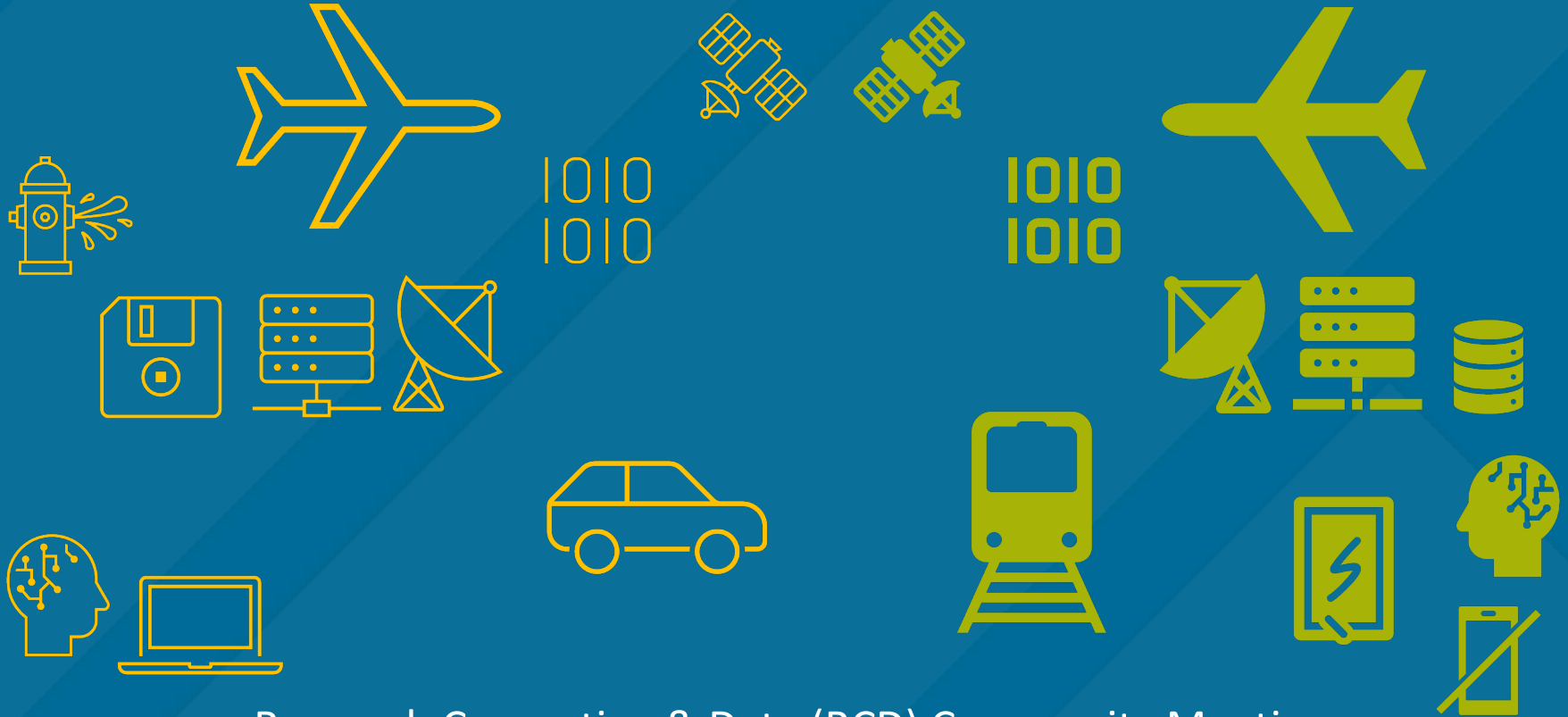


# IT Needs for Research Travel



Research Computing & Data (RCD) Community Meeting

April 11, 2023

# Meeting Basics



Google Doc notes page in chat



Meeting will be recorded



Use the Zoom chat for questions, ideas, and suggestions



Or Raise Hand  
(Reactions > Raise Hand)



Live Transcript (auto-generated closed captions) is available



Meeting content (recording, notes, discussion, slides, chat log) will posted on meeting page





## Agenda

- Meeting Basics
- Welcome to the UCSD RCD Community!
- Research Travel
  - Goal for Today
  - Some Background
  - Recommendations & Anecdotes
  - Discussion
- Upcoming Topics



# WELCOME TO THE UCSD RCD COMMUNITY!

## It's about us!



Research Computing and Data (RCD), also known as Cyberinfrastructure (CI), refers to foundational research support areas. This community includes researchers and their collaboration partners, those RCD professionals who include data scientists, systems engineers, software developers, research librarians, data wranglers, research facilitators, and more.

## Meetings



Our bi-monthly meetings are a chance to come together to discuss issues important to the UCSD research community, learn about resources, software, tools, and services relevant to our work.

<https://ucsd-rcd.github.io/meetings/>

## Mailing List

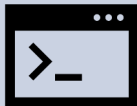


Our mailing list is a way to stay updated on the UCSD RCD Community, ask questions, and contribute your knowledge. We'd also love to hear your ideas for this community.

Google Groups [ucsd-rcd](https://groups.google.com/a/ucsd.edu/g/ucsd-rcd-l)  
<https://groups.google.com/a/ucsd.edu/g/ucsd-rcd-l>

## Website & GitHub Repos

Our website and GitHub repos are places to share resources, experiences, and examples in a way that's widely accessible.



<https://ucsd-rcd.github.io/>  
<https://github.com/ucsd-rcd>

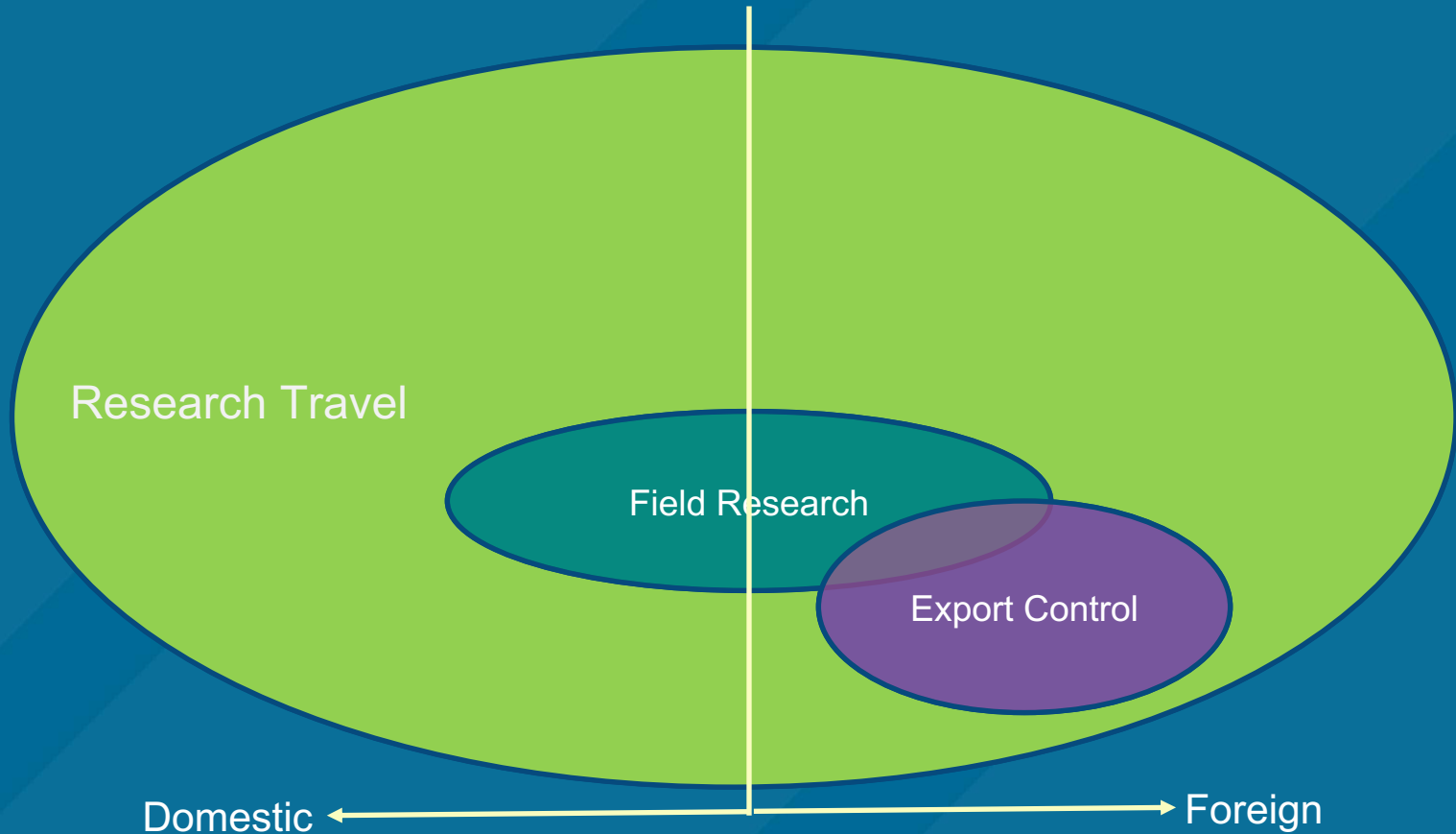
## Goal for Today:

A blue square graphic with a folded bottom-right corner, containing the text "Your Experience!".

Your  
Experience!

Please contribute your suggestions for planning and managing IT needs when traveling for research. Either as part of the discussion, or in the Google Doc (link in the Zoom chat).

# Research Travel & Topics



# Guidance? Policy?



- Not really
- Policy covers 3 areas for travel
  - Finances
  - Export Control
  - Field Research
- Some cybersecurity recommendations
- See meeting page for links

## International Travel Cybersecurity

Last Updated: March 28, 2023 2:14:34 PM PDT

[Give feedback](#)

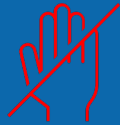
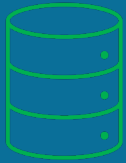
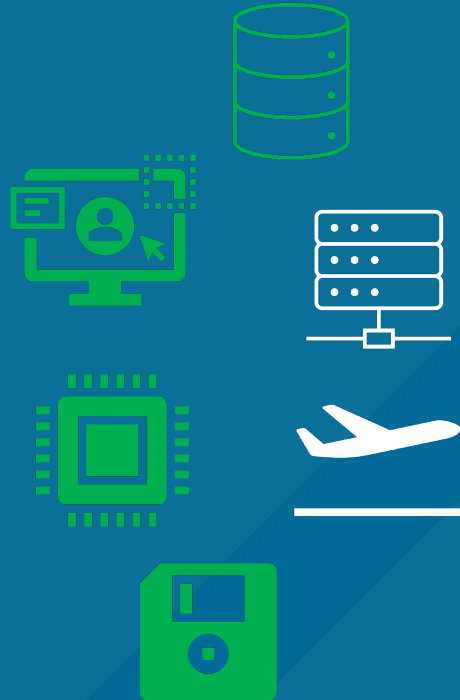
Find guidance and resources to help reduce your cyber risk and protect UC San Diego data during international travel.

For many of us, having a cell phone or other electronic device is an integral part of daily life, whether at home or on the road. And traveling today is so much easier with technology. You can stay productive, entertained, and in touch. Unfortunately, traveling with devices can mean increased cyber risks for keeping your personal and University information private, as well as increased potential for device theft.





# Export Control



## Export Control (Blink)

- Some devices and data may fall under export control.
- Address this before traveling
- See the export control FAQ section “Travel Abroad”
- PDF: What you need to know

## Export Control Office

Last Updated: March 30, 2023 4:43:13 PM PDT

Give [feedback](#)

## Research Compliance and Integrity

The Export Control Office is one of the four core offices of the [Research Compliance and Integrity Program](#) in Research Affairs, along with [Conflict of Interest](#), [IACUC](#) and [Research Misconduct](#).



# What is Field Research?

- Outdoor excursions conducted in a non-academic or business setting
- Field stations, natural reserves, public lands or parks, wilderness areas, coastline or waterways, or controlled sites such as construction areas, excavations, or mines
- Sites where emergency services are > 1 hour away
- Required to complete field operations planner form 1 month prior to a trip
  - NSF-funded projects required to include a brief written plan for safe & inclusive off-campus and off-site research.
- Field IT guidance falls under the communications section of the field operations planner.
- Requires communication plan with contact frequency & procedures. Can use radio, phone, satellite phone, GPS-device (SPOT tracker or similar).

## Resources

- UCSD: [Field Operational Planner and Field Safety](#)
- SIO: [Field Research Safety Planning Requirements](#)
- UCOP: [UC Field Research Safety Manual](#)

# Crowd Sourced Recommendations & Anecdotes

Travel with laptop and several spare portable harddisks. Some to leave in the field, others to bring back with new video data.

Try to do backups of compressed versions of new data by connecting to VPN overnight.

Recently, bandwidth from site has been insufficient even for the compressed videos.

Wireless (cell) carriers are not the same.

Colleagues have picked up malware for random carriers.

Recommendations would be useful.

Highly recommend having a backup independent communication device.

EH&S has information regarding rental and/or purchasing.

Starlink can bring internet to remote sites.

# Discussion Topics

## Areas to Think About

- Risk
  - Cybersecurity
  - Accidents
  - Travel Insurance
  - Emergency Contacts
- System Connectivity & Integration
  - Power
  - Networking
  - Software
- Packing Equipment
- Policies
  - Export Control
  - Privacy & Compliance
- Field Research

## Before

- Purchases & permits & policies
- Spares
- Cell phone data plan
- Data planning, what comes back & how

## During

- Data backups & archiving
- Handling disasters & accidents
- System maintenance

## After

- Data destruction
- Post-trip paperwork
- Return rented or leased equipment

# Upcoming Topics

June 13

*Where to Compute? Campus & National Resources*

## COMMUNITY DISCUSSION

Questions, ideas, suggestions!

UCSD RCD Community?

Meeting Topics?

Needs?



### **Mailing List Reminder**

Google Groups [ucsd-rcd](https://groups.google.com/a/ucsd.edu/g/ucsd-rcd-l)

<https://groups.google.com/a/ucsd.edu/g/ucsd-rcd-l>